

PARTS LIST

POWER SPRAYER

NS532

NOTE :

1. Use ZENOAH genuine parts as specified in the parts list for repair and/or replacement.
2. ZENOAH does not warrant the machines, which have been damaged by the use of any parts other than those specified by the company.
3. When placing parts orders for repair and/or replacement, check if the model name and the serial number are applicable to those specified in the parts list, then use parts number described in the parts list.
4. The contents described in the parts list are accurate as of July 1997 and may change due to improvement.
5. The parts for the machine shall be supplied ten (10) years after the machine is discontinued. [It is possible that some specific parts may be subject to change of their delivery term and list price within the limit of ten (10) years after the machine is discontinued. It is also possible that some parts may be available even after the limit of ten (10) years.]

Fig.1 FRAME and TANK GROUP

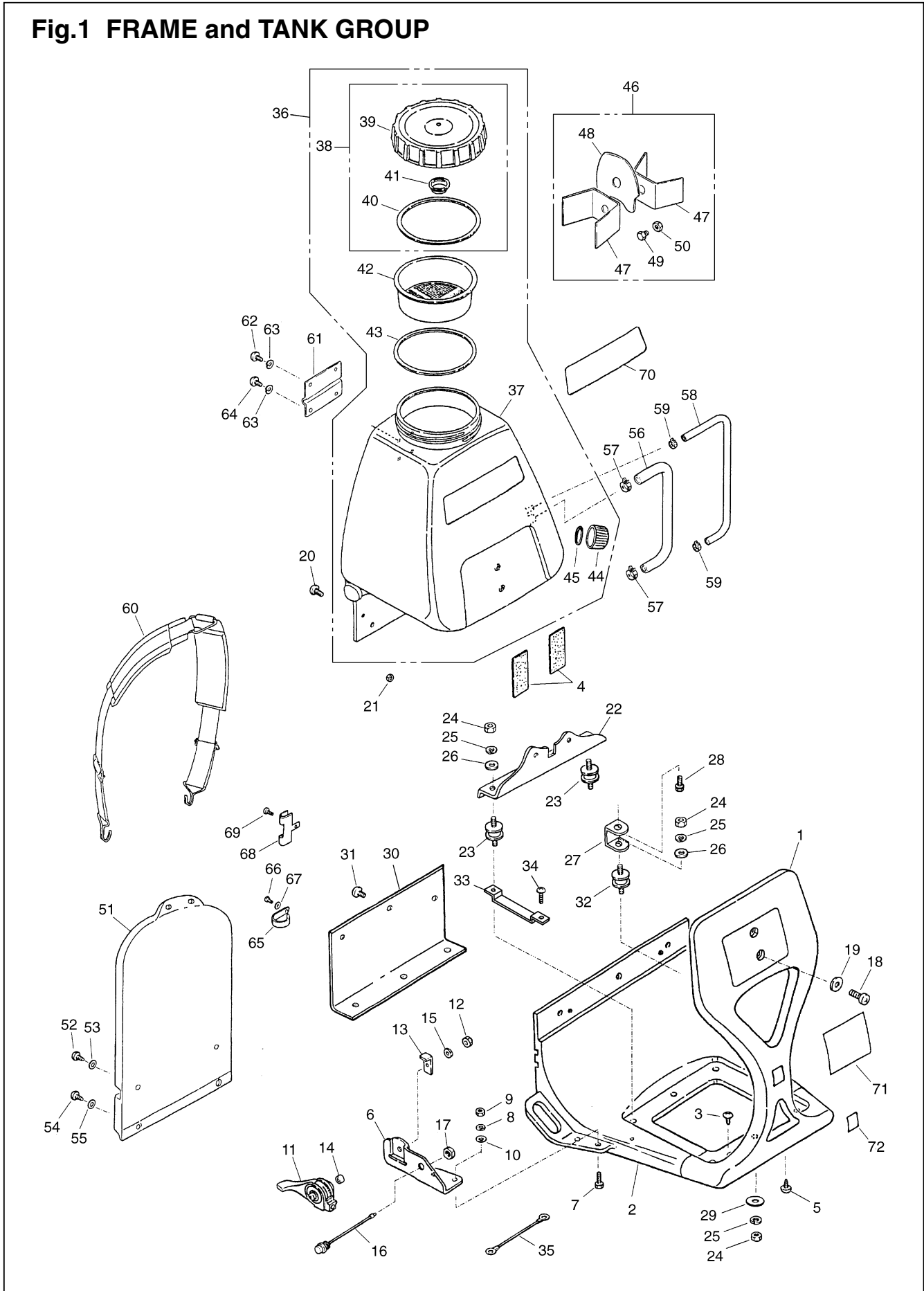


Fig.1 FRAME and TANK GROUP

Key#	PART NUMBER	DESCRIPTION	Q'TY /UNIT	NOTE	Key#	PART NUMBER	DESCRIPTION	Q'TY /UNIT	NOTE
1	2463-21110	FRAME, flont	1		53	01641-20608	WASHER	2	
2	2463-21120	FRAME, base	1		54	2463-25330	SCREW	2	M5x16
3	2463-21130	SCREW	2		55	01641-20608	WASHER	2	
4	2463-21140	DUMPER, sponge	2		56	2463-25410	HOSE, intake	1	
5	2463-21150	SCREW	1		57	2463-25420	CLIP	2	
6	2463-21210	BRACKET	1		58	2463-25430	HOSE	1	
7	0225-00616	BOLT	2		59	2463-25440	CLIP	2	
8	01602-20619	WASHER	2		60	2463-25501	HARNESS ASSY	1	
9	0280-10605	NUT	2		61	2463-25610	BRACKET	1	
10	01641-20608	WASHER	2		62	2463-25320	SCREW	2	M6x10
11	5542-82200	THROTTLE LEVER	1		63	01602-20619	WASHER	4	
12	0280-10504	NUT	1		64	2463-25630	SCREW	2	M6x12
13	2463-21220	STOPPER	1		65	2463-25640	BAND	1	
14	2463-21230	COLLAR	1		66	2463-25650	SCREW	1	
15	01601-20513	WASHER	1		67	01601-20513	WASHER	1	
16	2463-21310	SWITCH	1		68	2463-25660	BAND	1	
17	2463-21320	NUT	1		69	2463-25670	SCREW	1	
18	2463-21410	SCREW	2		70	T4014-25710	LABEL, name	1	
19	2463-21420	WASHER	2		71	848A9790R0	LABEL	1	
20	2463-21430	SCREW	3		72	2463-25740	LABEL	1	
21	2463-21440	NUT	3						
22	2463-21510	BASE	1						
23	2463-21520	DUMPER	2						
24	2463-21530	NUT	6						
25	2463-21540	WASHER	6						
26	2463-21550	WASHER	3						
27	2463-21560	BASE, engine	1						
28	2463-21570	BOLT	1						
29	2463-21580	WASHER	3						
30	2463-21610	COVER, frame	1						
31	2463-21620	SCREW	6						
32	2463-21630	DUMPER	1						
33	T4014-25750	PLATE	2						
34	T4014-25760	SCREW	2						
35	5542-73200	CORD COMP	1						
36	2463-25000	TANK ASSY	1						
37	2463-25110	• TANK	1						
38	2463-25200	• CAP ASSY	1						
39	2463-25210	•• CAP	1						
40	2463-25220	•• PACKING	1						
41	2463-25230	•• BREATHER	1						
42	2463-25240	•• STRAINER	1						
43	2463-25250	•• PACKING	1						
44	2463-25260	•• CAP, drain	1						
45	2463-25270	•• PACKING	1						
46	2463-25900	PLATE ASSY	1						
47	2463-25910	• PLATE, side	2						
48	2463-25920	• PLATE, center	1						
49	2463-25930	• BOLT	1						
50	2463-25940	• NUT	1						
51	2463-25311	PAD	1						
52	2463-25320	SCREW	2	M6x10					

Fig.2 PUMP and NOZZLE GROUP

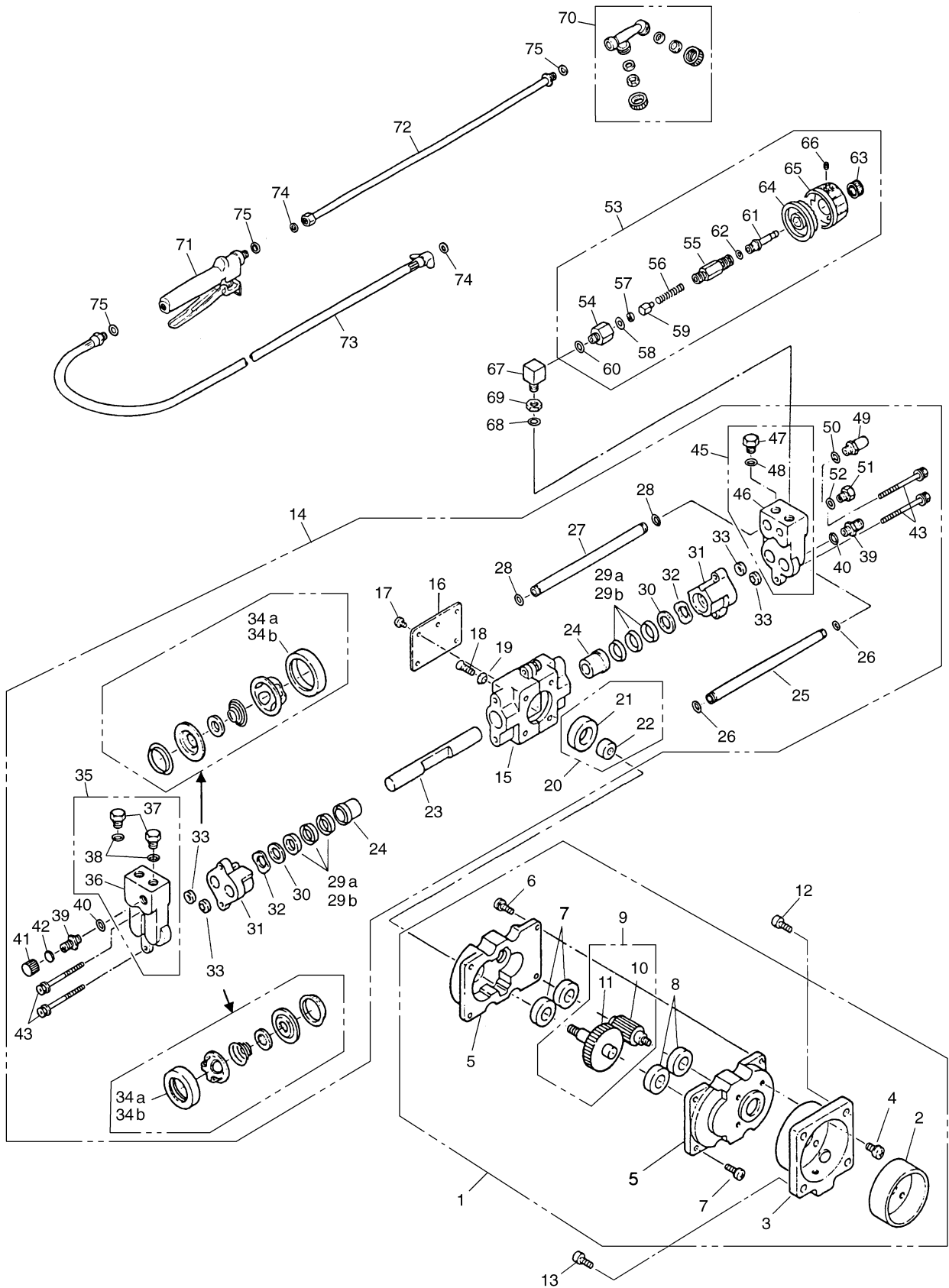


Fig.2 PUMP and NOZZLE GROUP

Key#	PART NUMBER	DESCRIPTION	Q'TY /UNIT	NOTE	Key#	PART NUMBER	DESCRIPTION	Q'TY /UNIT	NOTE
1	T4014-11000	CASE ASSY	1		51	2463-12660	• PLUG	1	
2	2463-11110	• DRUM, clutch	1		52	2463-12670	• PACKING	1	
3	2463-11120	• CASE, clutch	1		53	2463-13000	PRESSURE GOVERNOR ASSY	1	
4	2463-11140	• SCREW	4	M5x12	54	2463-13110	• JOINT	1	
5	T4014-11210	• CASE, gear	2		55	2463-13120	• GOVERNOR	1	
6	2463-11230	• SCREW	4		56	2463-13130	• SPRING	1	
7	2463-11240	• BEARING	2		57	2463-13140	• SHEET	1	
8	2463-11250	• BEARING	2		58	2463-13150	• PACKING	1	
9	2463-11300	• GEAR SET	1		59	2463-13160	• VALVE	1	
10	2463-11310	•• PINION	1		60	2463-13170	• PACKING	1	
11	2463-11320	•• GEAR, large	1		61	2463-13180	• STOPPER	1	
12	T4014-11130	BOLT	4		62	2463-13190	• PACKING	1	
13	T4014-11130	BOLT	2		63	2463-13210	• KNOB, for dial	1	
14	T4014-12000	PUMP ASSY	1		64	2463-13220	• PANEL	1	
15	T4014-12110	• CRANKCASE	1		65	2463-13230	• DIAL, for pressure	1	
16	T4014-12120	• COVER	1		66	2463-13240	• SCREW	1	
17	2463-12130	• SCREW	4	M5x6	67	2463-13310	ELBOW	1	
18	T4014-12140	• SCREW	4		68	2463-13320	PACKING	1	
19	2463-12150	• WASHER	4		69	2463-13330	NUT	1	
20	T4014-12200	• CAM SET	1		70	T4014-25800	NOZZLE ASSY	1	
21	T4014-12210	•• BEARING	1		71	2463-25850	COCK	1	
22	T4014-12220	•• CAM	1		72	2463-25860	PIPE	1	600mm
23	T4014-12310	• PLUNGER	1		73	2463-25870	HOSE	1	D6.5x1.25mm
24	2463-12320	• GUIDE	2		74	2463-25880	PACKING	2	
25	T4014-12330	• PIPE, discharge	1		75	2463-25890	PACKING	3	
26	T4014-12410	• RING	2						
27	T4014-12340	• PIPE, intake	1						
28	T4014-12420	• RING	2						
29a	2463-12430	• PACKING	6						
29b	2463-12460	• PACKING, fluorine	6	OP					
30	2463-12440	• PACKING	2						
31	T4014-12450	• CASE, packing	2						
32	2463-12350	• WASHER	2						
33	T4014-12500	• VALVE ASSY	4						
34a	2463-12560	•• PACKING	4						
34b	2463-12570	•• PACKING, fluorine	4	OP					
35	T4014-12600	• HEAD, left ASSY	1						
36	T4014-12610	•• HEAD, left	1						
37	2463-12660	•• PLUG	2						
38	2463-12670	•• PACKING	2						
39	2463-12620	• NIPPLE, discharge	2						
40	2463-12630	• PACKING	2						
41	2463-12640	• CAP	1						
42	2463-12650	• PACKING	1						
43	T4014-12680	• BOLT with WASHER	4						
45	T4014-12700	• HEAD, right ASSY	1						
46	T4014-12710	•• HEAD, right	1						
47	2463-12660	•• PLUG	1						
48	2463-12670	•• PACKING	1						
49	2463-12720	• NIPPLE, intake	1						
50	2463-12730	• PACKING	1						

Fig.3 ENGINE GROUP

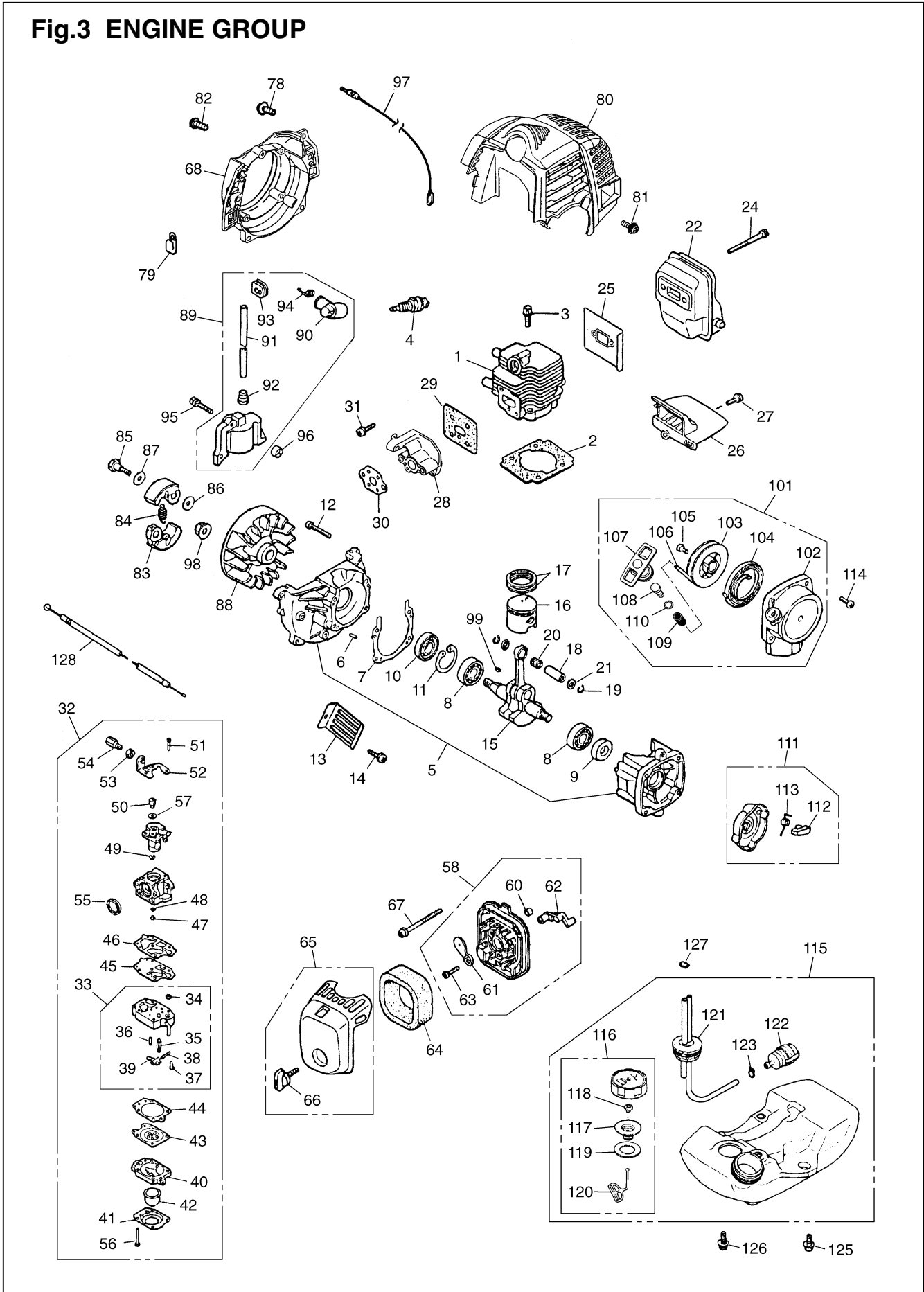


Fig.3 ENGINE GROUP

Key#	PART NUMBER	DESCRIPTION	Q'TY /UNIT	NOTE	Key#	PART NUMBER	DESCRIPTION	Q'TY /UNIT	NOTE
1	5580-12110	CYLINDER	1		65	T1701-82200	COVER ASS'Y	1	
2	5500-12213	GASKET, base	1		66	5500-82221	• KNOB	1	
3	1850-12130	BOLT	2		67	0263-90560	SCREW	2	
4	3699-90332	PLUG BPMR7A	1		68	T1815-31110	COVER, fan	1	
5	T1700-21000	CRANKCASE COMP.	1		78	0263-90520	SCREW	4	
6	2629-21130	• PIN	3		79	8488K40010	CLAMP	1	
7	5500-21141	GASKET	1		80	T1815-32111	COVER, engine	1	
8	06030-06001	BEARING	2		81	T1700-32162	SCREW	1	
9	2169-21210	SEAL	1		82	0263-90510	SCREW	1	
10	1850-21220	SEAL	1		83	848-EA0-5110	SHOE	2	
11	04065-02812	SNAP RING	1		84	T1700-51220	SPRING	1	
12	01252-30530	BOLT	4		85	1140-51250	SCREW	2	
13	5500-22110	GUARD	1		86	1140-51230	WASHER	2	
14	0263-90514	SCREW	1		87	T1600-51240	WASHER	2	
15	5500-42001	CRANKSHAFT COMP.	1		88	T1700-71110	ROTOR	1	
16	5600-41111	PISTON	1		89	T1700-71201	COIL ASS'Y	1	
17	1100-41210	RING	2		90	5500-72110	• CAP	1	
18	1101-41310	PIN	1		91	T1700-71220	• CORD	1	
19	1260-41320	RING	2		92	2616-71320	• CAP	1	
20	5500-41410	BEARING	1		93	5500-72130	• GROMMET	1	
21	1101-41340	WASHER	2		94	5500-72120	• SPRING	1	
22	T1700-15110	MUFFLER	1		95	3310-72150	BOLT	2	
24	01252-30550	BOLT	2		96	T1700-71260	SPACER	2	
25	T1600-15210	GASKET	1		97	5601-73200	CORD COMP.	1	
26	5500-15221	PLATE	1		98	1650-43230	NUT	1	
27	0263-90416	SCREW	1		99	1000-43240	KEY	1	
28	T1700-13160	INSULATOR	1		101	T1700-75100	RECOIL ASS'Y	1	
29	5500-13121	GASKET, insulator	1		102	5500-75110	• CASE COMP.	1	
30	5500-13131	GASKET, carburetor	1		103	1850-75120	• REEL	1	
31	0263-90520	SCREW	2		104	1850-75130	• SPRING	1	
32	5501-81000	CARBURETOR ASS'Y	1		105	1850-75151	• SCREW	1	
33	1850-81450	• BODY ASS'Y	1		106	T1600-75160	• ROPE	1	
34	3306-81380	•• SCREEN	1		107	T1600-75310	• KNOB	1	
35	3356-81310	•• VALVE	1		108	T1600-75321	• COLLAR	1	
36	1850-81270	•• SPRING	1		109	T1600-75330	• SPRING	1	
37	1850-81220	•• SCREW	1		110	T1600-75210	• WASHER	1	
38	3310-81250	•• PIN	1		111	1850-75201	PULLEYASS'Y	1	
39	3310-81230	•• LEVER	1		112	1850-75221	• RATCHET	1	
40	1850-81490	• BODY, purge	1		113	1850-75230	• SPRING	1	
41	1850-81520	• COVER, pump	1		114	T1700-32162	SCREW	4	
42	1751-81510	• PUMP, priming	1		115	5912-85004	TANK ASS'Y	1	
43	3310-81260	• DIAPHRAGM	1		116	5607-85201	• CAP ASS'Y	1	
44	1850-81470	• GASKET, diaphragm	1		117	5601-85300	•• HOLDER	1	
45	1065-81420	• DIAPHRAGM, pump	1		118	5601-85260	•• FILTER	1	
46	1065-81410	• GASKET, pump	1		119	5500-85220	•• PACKING	1	
47	5500-81251	• JET	1		120	4820-85260	•• STOPPER	1	
48	1751-81240	• RING	1		121	5911-85300	• PIPE COMP.	1	
49	1751-81130	• RING	1		122	5500-85400	• FILTER ASS'Y	1	
50	1881-81140	• SWIVEL	1		123	1260-85460	• CLIP	1	
51	1752-81110	• SCREW	2		125	0263-90520	SCREW	1	
52	5500-81120	• BRACKET	1		126	5500-85510	SCREW	2	
53	1751-81180	• NUT, adjuster	1		127	1950-86120	CLIP	1	
54	1918-81170	• SCREW, adjuster	1		128	5580-83100	THROTTLE CABLE COMP.	1	
55	1881-81130	• RING	1						
56	1850-81530	• SCREW	4						
57	5500-81160	• WASHER	1						
58	T1700-82100	BODY ASS'Y	1						
60	1970-82190	• SLEEVE	2						
61	T1700-82130	• PLATE, choke	1						
62	T1700-82140	• LEVER, choke	1						
63	2630-33610	• SCREW	1						
64	5500-82171	ELEMENT	1						

Fig.4 CARBURETOR GROUP

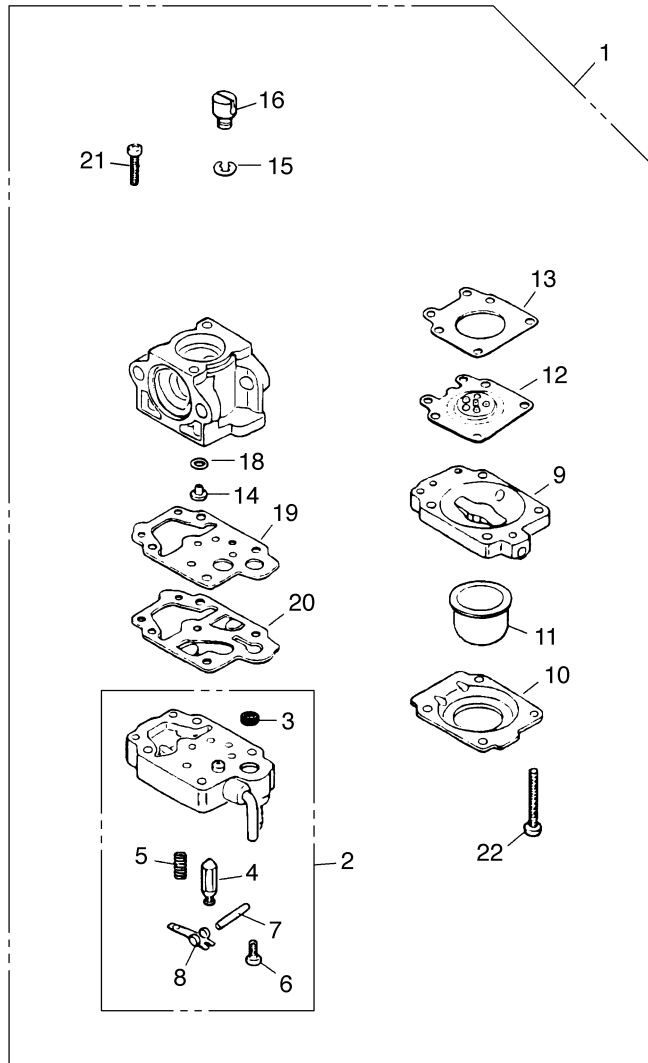


Fig.5 TOOL

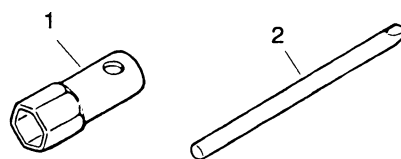


Fig.4 CARBURETOR GROUP

Key#	PART NUMBER	DESCRIPTION	Q'TY /UNIT	NOTE	Key#	PART NUMBER	DESCRIPTION	Q'TY /UNIT	NOTE
1	5501-81000	CARBURETOR ASS'Y	1	WYJ-113A					
2	1850-81450	• BODY ASS'Y	1						
3	3306-81380	•• SCREEN	1						
4	3356-81310	•• VALVE	1						
5	1850-81270	•• SPRING	1						
6	1850-81220	•• SCREW	1						
7	3310-81250	•• PIN	1						
8	3310-81230	•• LEVER	1						
9	1850-81490	• BODY, purge	1						
10	1850-81520	• COVER, pump	1						
11	1751-81510	• PUMP, priming	1						
12	3310-81260	• DIAPHRAGM	1						
13	1850-81470	• GASKET, diaphragm	1						
14	5500-81251	• JET	1	#41					
15	1751-81130	• RING	1						
16	1881-81140	• SWIVEL	1						
18	1751-81240	• O-RING	1						
19	1065-81410	• GASKET, pump	1						
20	1065-81420	• DIAPHRAGM, pump	1						
21	1752-81110	• SCREW	2						
22	1850-81530	• SCREW	4						

Fig.5 TOOL

Key#	PART NUMBER	DESCRIPTION	Q'TY /UNIT	NOTE	Key#	PART NUMBER	DESCRIPTION	Q'TY /UNIT	NOTE
1	1110-91320	SOCKET	1						
2	3582-91330	BAR	1						