

This catalog covers:
TJ035E-□S50

GRID NO. This grid covers:
A-01 TITLE

PARTS CATALOG

2-STROKE ENGINE

TJ035E

PRODUCT CODE	NOTE
TJ035E-AS50	BRUSH-CUTTER
TJ035E-BS50	

This catalog covers:

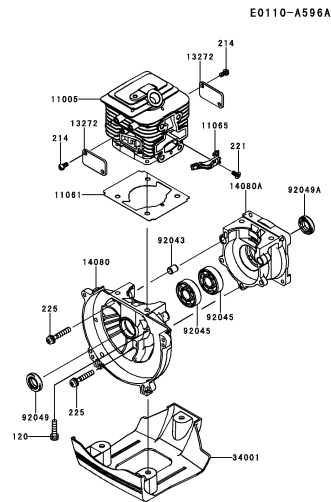
TJ035E- □ S50

GRID NO.

B-01

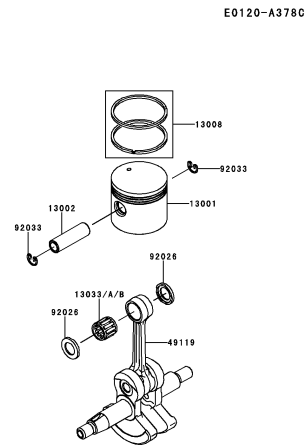
This grid covers:

PICTORIAL INDEX



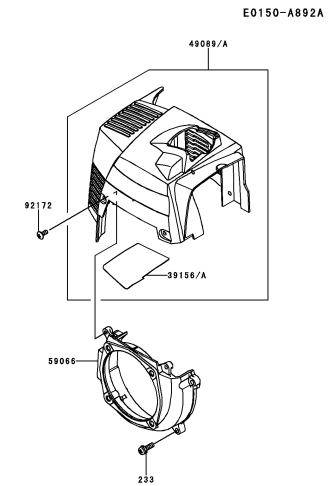
B-03

CYLINDER/CRANKCASE



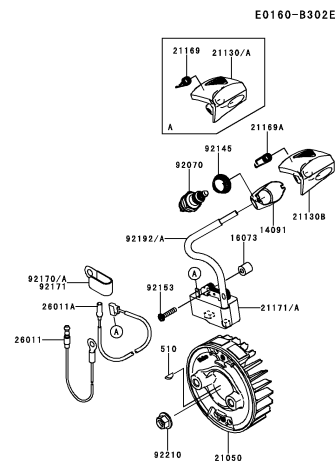
B-04

PISTON/CRANKSHAFT



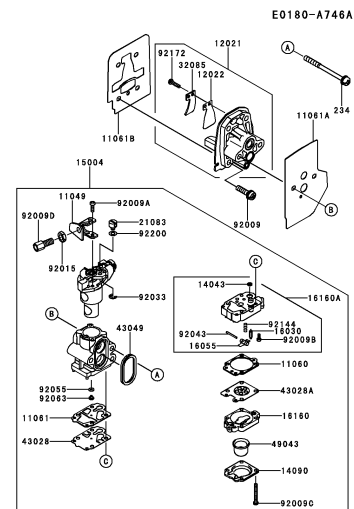
B-05

COOLING-EQUIPMENT



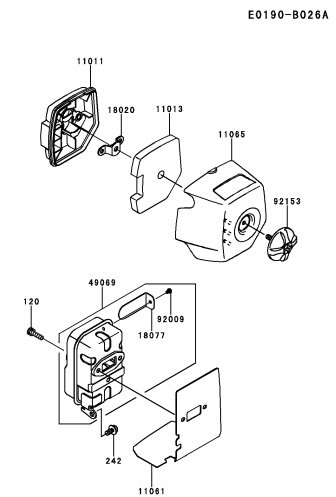
B-06

ELECTRIC-EQUIPMENT



B-07

CARBURETOR



B-08

AIR-FILTER/MUFFLER

This catalog covers:

TJ035E- □ S50

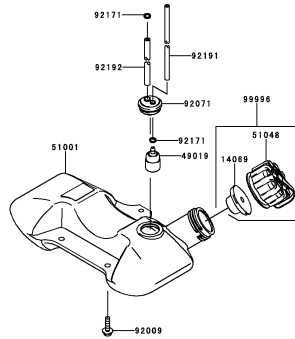
GRID NO.

B-02

This grid covers:

PICTORIAL INDEX

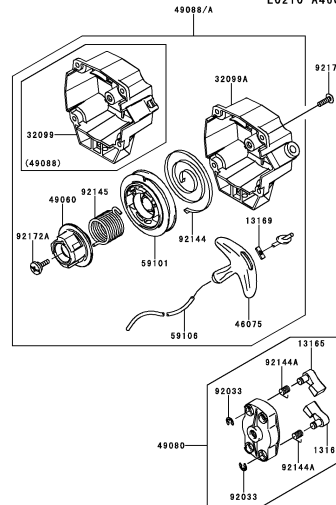
E0200-A649A



B-09

FUEL-TANK/FUEL-VALVE

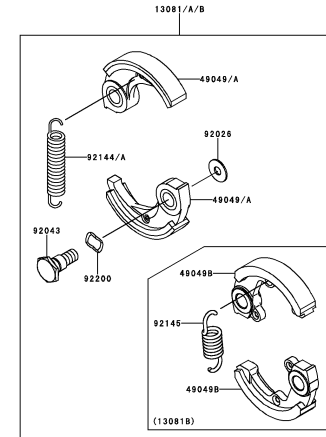
E0210-A460A



B-10

STARTER

E0220-A050B



B-11

P.T.O-EQUIPMENT

This catalog covers:

TJ035E- □ S50

GRID NO.

C-01

This grid covers:

PICTORIAL INDEX

F0290-B399A

56039



56070



56080



C-03

LABEL

This catalog covers:

TJ035E- □ S50

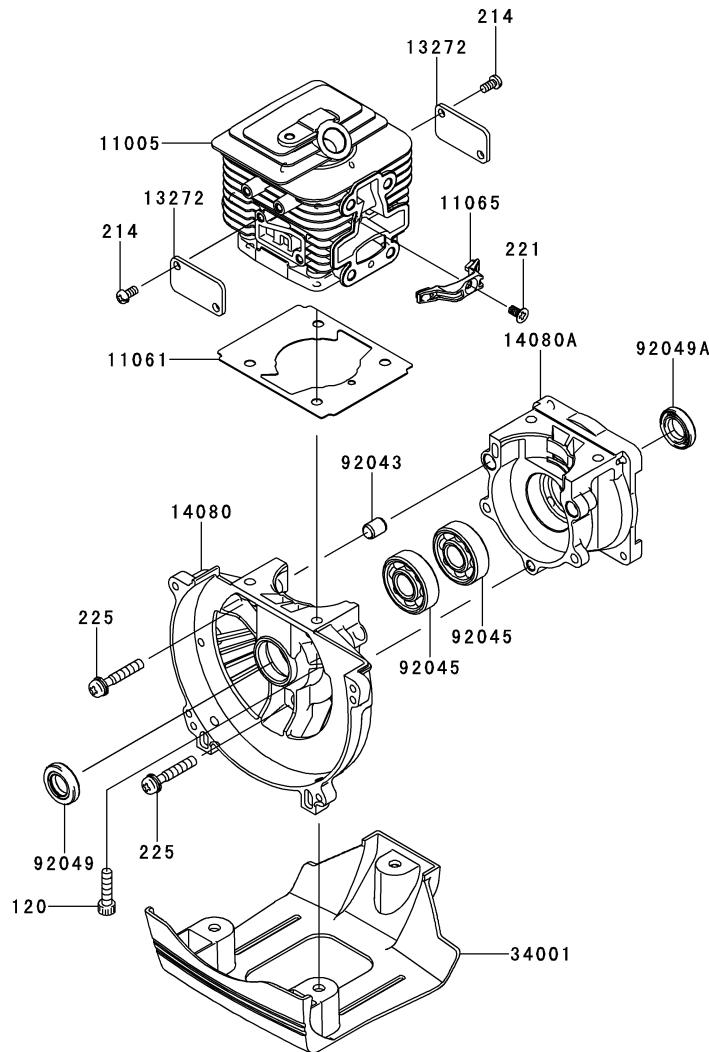
GRID NO.

B-03

This grid covers:

CYLINDER/CRANKCASE

E0110-A596A



Ref. No.	Part No.	Description	Quantity	
			A	B
11005	11005-2160	CYLINDER-ENGINE	1	1
11061	11061-2192	GASKET	1	1
11065	11065-2130	CAP	1	1
13272	13272-2009	PLATE	2	2
14080	14080-2064	CRANKCASE	1	1
14080A	14080-2065	CRANKCASE	1	1
34001	34001-2090	STAND	1	1
92043	92043-1302	PIN	2	2
92045	92045-2058	BEARING-BALL,6201C3	2	2
92049	92049-2253	SEAL-OIL,ISCD12X22X4.5	1	1
92049A	92049-2267	SEAL-OIL,ISCD 12X22X4.5F	1	1
120	120CB0520	BOLT-SOCKET,5X20	4	4
214	214AA0408	SCREW-PAN+-,4X8	4	4
221	221AA0408	SCREW-CSK-CROSS,4X8	1	1
225	225AA0530	SCREW-PAN-WSP-CROS,5X30	3	3

This catalog covers:

TJ035E- □ S50

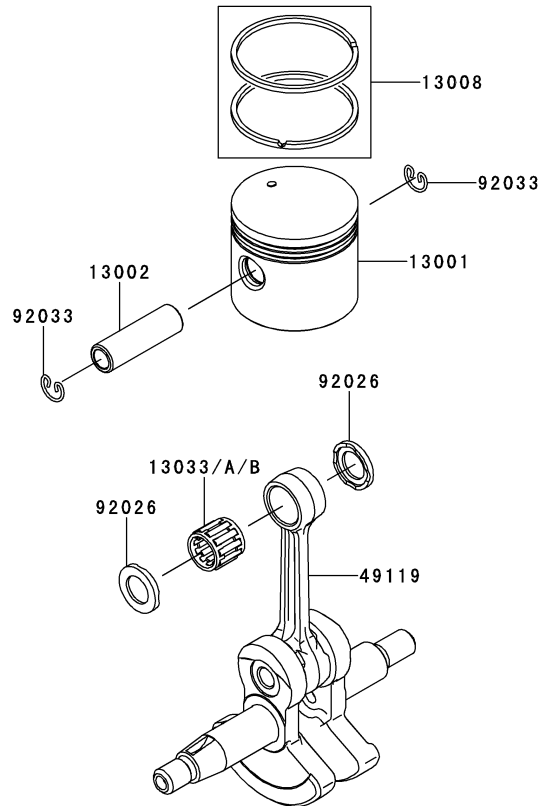
GRID NO.

B-04

This grid covers:

PISTON/CRANKSHAFT

E0120-A378C



Ref. No.	Part No.	Description	Quantity	
			A	B
13001	13001-2170	PISTON-ENGINE	1	1
13002	13002-2101	PIN-PISTON	1	1
13008	13008-6045	RING-SET-PISTON	1	1
13033	13033-2065	BEARING-SMALL END		1
13033A	13033-2065	BEARING-SMALL END	1	
13033B	13033-2067	BEARING-SMALL END	*	
49119	49119-2243	CRANKSHAFT-ASSY	1	1
92026	92026-2355	SPACER,9X15X1.8	2	2
92033	92033-2061	RING-SNAP	2	2

This catalog covers:

TJ035E- □ S50

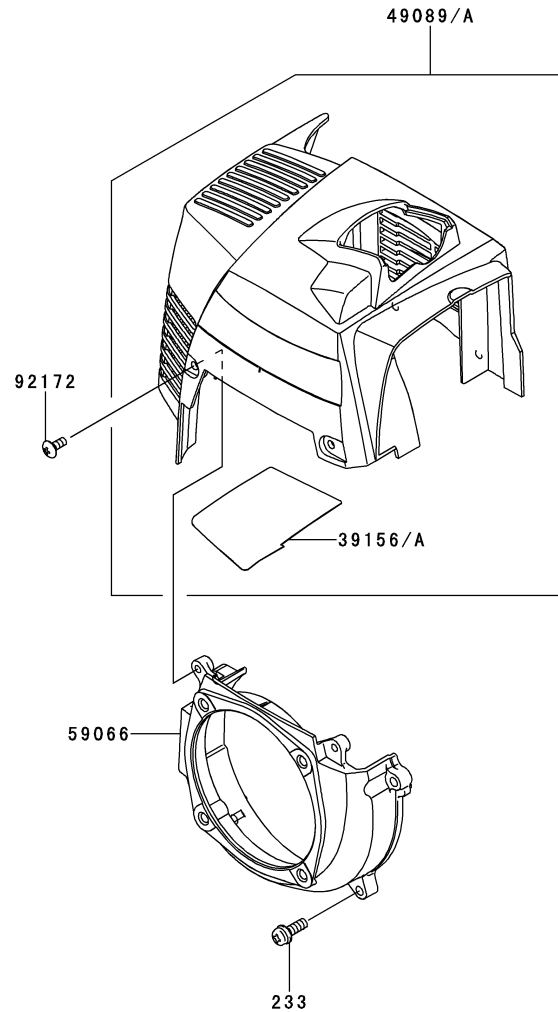
GRID NO.

B-05

This grid covers:

COOLING-EQUIPMENT

E0150-A892A



Ref. No.	Part No.	Description	Quantity	
			A	B
39156	39156-2089	PAD,SHROUD		1
39156A	39156-2089	PAD,SHROUD	1	
49089	49089-2745	SHROUD-ENGINE	1	
49089A	49089-2748	SHROUD-ENGINE		1
59066	59066-2800	HOUSING-FAN	1	1
92172	92172-2060	SCREW,4X10	2	2
233	233AA0516	SCREW-PAN-WP+,-,5X16	4	4

This catalog covers:

TJ035E- □ S50

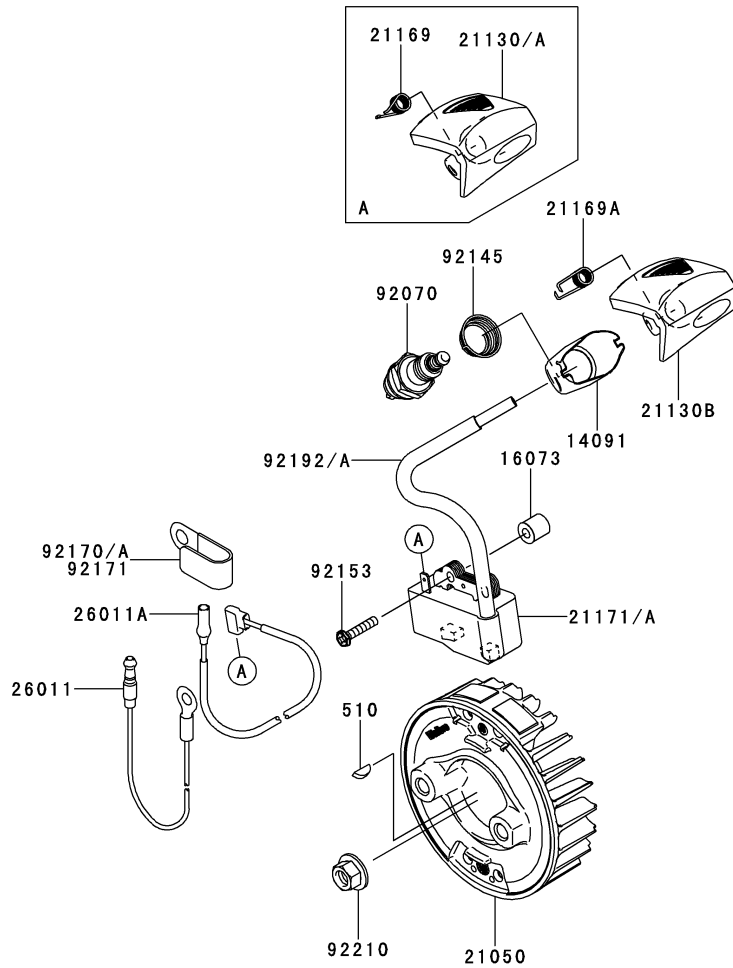
GRID NO.

B-06

This grid covers:

ELECTRIC-EQUIPMENT

E0160-B302E

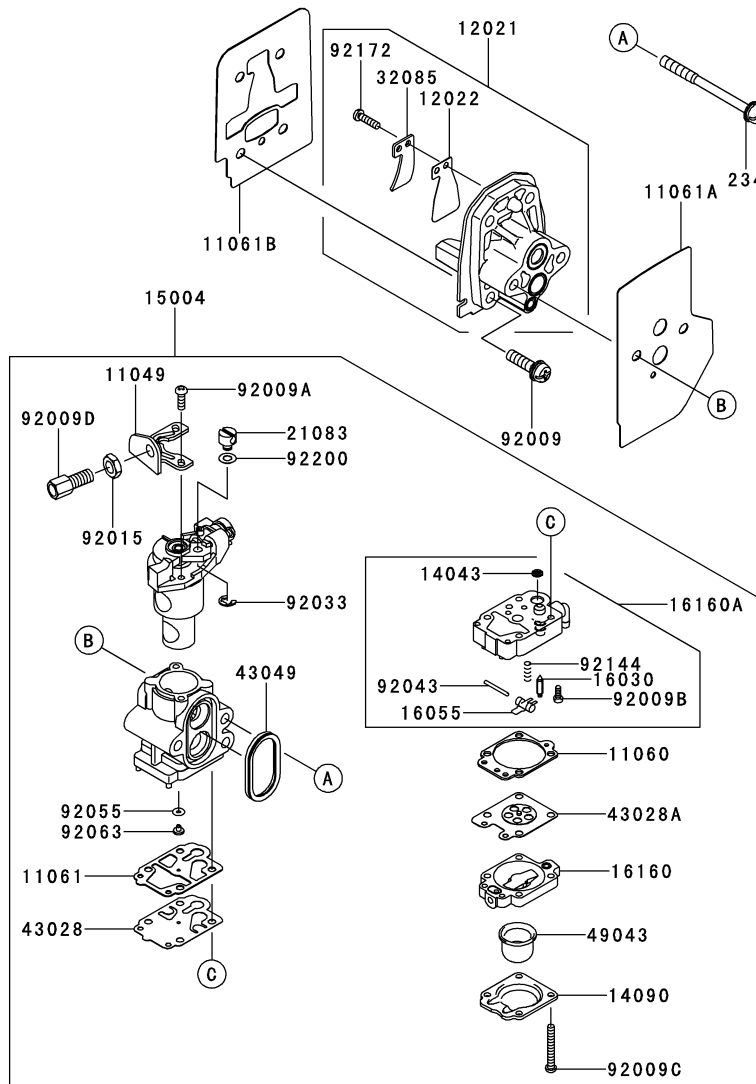


Ref. No.	Part No.	Description	Quantity	
			A	B
14091	14091-2147	COVER		1
16073	16073-2220	INSULATOR	2	2
21050	21050-2317	FLYWHEEL	1	1
21130	21130-2074	CAP-SPARK PLUG	*	
21130A	21130-2077	CAP-SPARK PLUG	1	
21130B	21130-2078	CAP-SPARK PLUG		1
21169	21169-2051	TERMINAL	1	
21169A	21169-2078	TERMINAL		1
21171	21171-2257	COIL-ASSY-IGNITION	1	
21171A	21171-2270	COIL-ASSY-IGNITION		1
26011	26011-2113	WIRE-LEAD	1	1
26011A	26011-2361	WIRE-LEAD,L=230	1	1
92070	92070-2107	PLUG-SPARK,BPMR7A(NGK),SOLID	1	1
92145	92145-2193	SPRING		1
92153	92153-2134	BOLT,4X20	2	2
92170	92170-2041	CLAMP	1	
92170A	92170-2041	CLAMP		*
92171	92171-2067	CLAMP		1
92192	92192-2135	TUBE		1
92192A	92192-2165	TUBE,6X6.6X80	1	
92210	92210-2094	NUT,M8	1	1
510	510A3100	KEY-WOODRUFF	1	1

This catalog covers:
TJ035E- □ S50

GRID NO. This grid covers:
B-07 CARBURETOR

E0180-A746A



Ref. No.	Part No.	Description	Quantity	
			A	B
11049	11049-2006	BRACKET	1	1
11060	11060-2111	GASKET	1	1
11061	11061-2054	GASKET	1	1
11061A	11061-2208	GASKET,CARBURETOR/INSULATOR	1	1
11061B	11061-2209	GASKET,CYLINDER/INSULATOR	1	1
12021	12021-2055	VALVE-ASSY-REED	1	1
12022	12022-2060	VALVE-REED	1	1
14043	14043-2051	FILTER	1	1
14090	14090-2017	COVER,PRIMER PUMP	1	1
15004	15004-2049	CARBURETOR-ASSY	1	1
16030	16030-2078	VALVE-FLOAT	1	1
16055	16055-2051	LEVER	1	1
16160	16160-2089	BODY	1	1
16160A	16160-2141	BODY	1	1
21083	21083-2073	ARM	1	1
32085	32085-2106	STOPPER	1	1
43028	43028-2067	DIAPHRAGM	1	1
43028A	43028-2096	DIAPHRAGM	1	1
43049	43049-2062	PACKING	1	1
49043	49043-2067	PUMP-PRIMING	1	1
92009	92009-2249	SCREW,5X20	4	4
92009A	92009-2277	SCREW	2	2
92009B	92009-2336	SCREW	1	1
92009C	92009-2337	SCREW	4	4
92009D	92009-2354	SCREW	1	1
92015	92015-2145	NUT	1	1
92033	92033-2078	RING-SNAP	1	1
92043	92043-2094	PIN	1	1
92055	92055-2147	RING-O	1	1
92063	92063-2393	JET-MAIN,#37	1	1
92144	92144-2308	SPRING	1	1
92172	92172-2091	SCREW,3X12	1	1
92200	92200-2074	WASHER	1	1
234	234AA0560	SCREW-PAN-WSP+,-5X60	2	2

This catalog covers:

TJ035E- □ **S50**

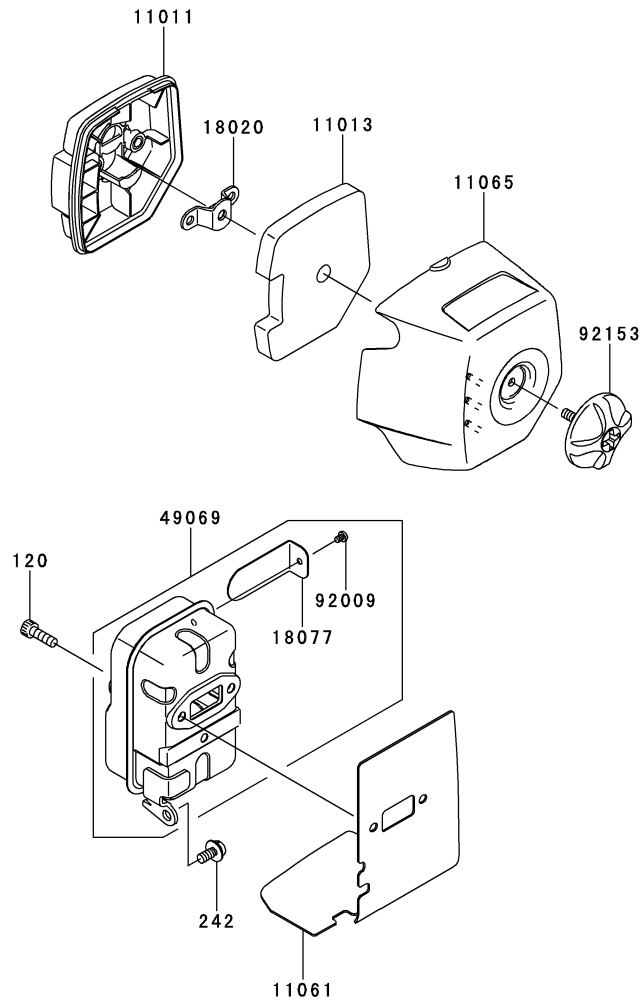
GRID NO.

B-08

This grid covers:

AIR-FILTER/MUFFLER

E0190-B026A



Ref. No.	Part No.	Description	Quantity	
			A	B
11011	11011-2366	CASE-AIR FILTER	1	1
11013	11013-2229	ELEMENT-AIR FILTER	1	1
11061	11061-2193	GASKET,MUFFLER	1	1
11065	11065-2125	CAP	1	1
18020	18020-2091	BAFFLE	1	1
18077	18077-2139	ARRESTER-SPARK	1	1
49069	49069-2435	MUFFLER-ASSY	1	1
92009	92009-2411	SCREW	1	1
92153	92153-2128	BOLT	1	1
120	120CB0516	BOLT-SOCKET,5X16	2	2
242	242AA0512	SCREW-PAN-WSP+,-,5X12	1	1

This catalog covers:

TJ035E- □ S50

GRID NO.

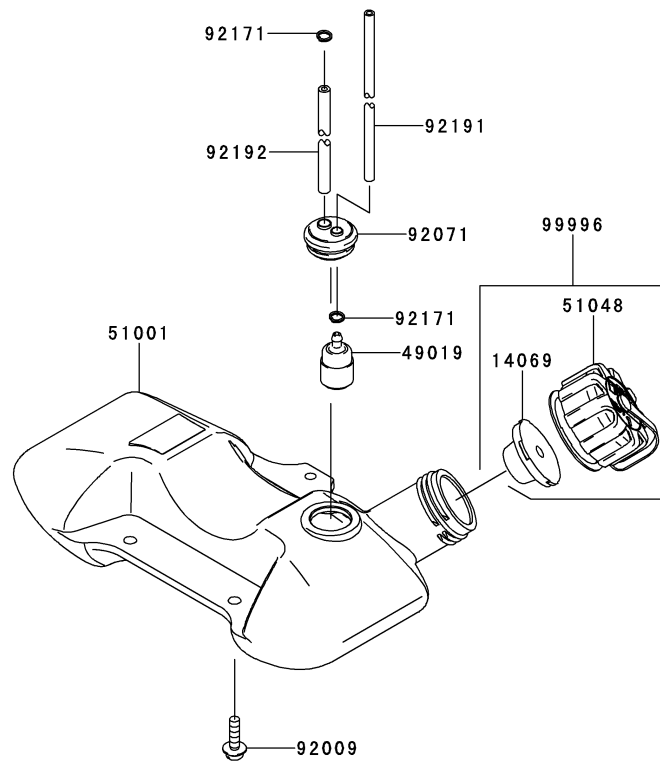
B-09

This grid covers:

FUEL-TANK/FUEL-VALVE

E0200-A649A

Ref. No.	Part No.	Description	Quantity	
			A	B
14069	14069-2088	BREATHER	1	1
49019	49019-2114	FILTER-FUEL	1	1
51001	51001-2336	TANK-COMP-FUEL	1	1
51048	51048-2083	CAP-ASSY-TANK	1	1
92009	92009-2383	SCREW,5X20	3	3
92071	92071-2142	GROMMET,FUEL TANK	1	1
92171	92171-2073	CLAMP	2	2
92191	92191-2102	TUBE,3X5X182	1	1
92192	92192-2117	TUBE,3X6X90	1	1
99996	99996-6089	CAP-TANK & BREATHER,ASSY	1	1



This catalog covers:

TJ035E- □ S50

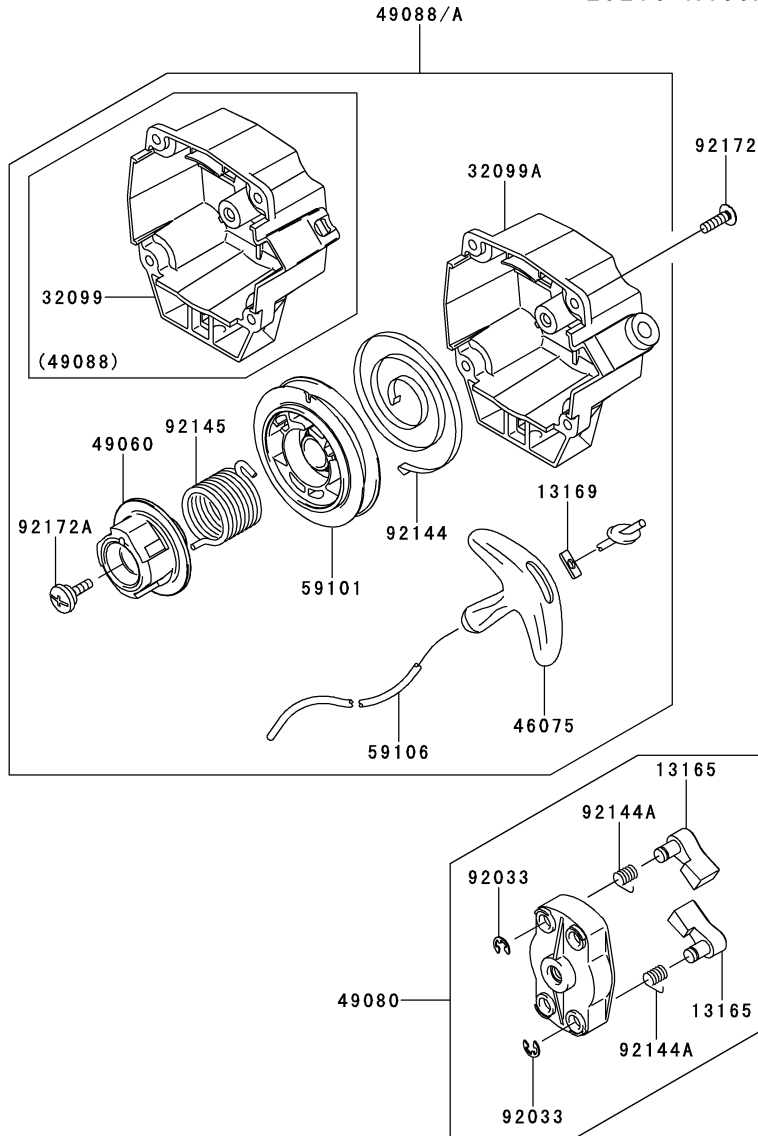
GRID NO.

B-10

This grid covers:

STARTER

E0210-A460A



Ref. No.	Part No.	Description	Quantity	
			A	B
13165	13165-2103	PAWL	2	2
13169	13169-2386	PLATE,RECOIL STARTER	1	1
32099	32099-2419	CASE,STARTER-RECOIL	1	
32099A	32099-2433	CASE,STARTER-RECOIL		1
46075	46075-2161	GRIP,STARTER-RECOIL	1	1
49060	49060-2062	CAM,STARTER-RECOIL	1	1
49080	49080-2201	PULLEY-STARTING	1	1
49088	49088-2566	STARTER-RECOIL	1	
49088A	49088-2588	STARTER-RECOIL		1
59101	59101-2119	REEL,STARTER-RECOIL	1	1
59106	59106-2072	ROPE,3.5X850	1	1
92033	92033-2010	RING-SNAP	2	2
92144	92144-2054	SPRING	1	1
92144A	92144-2157	SPRING	2	2
92145	92145-2149	SPRING	1	1
92172	92172-2061	SCREW,4X14	4	4
92172A	92172-2065	SCREW	1	1

This catalog covers:

TJ035E- **S50**

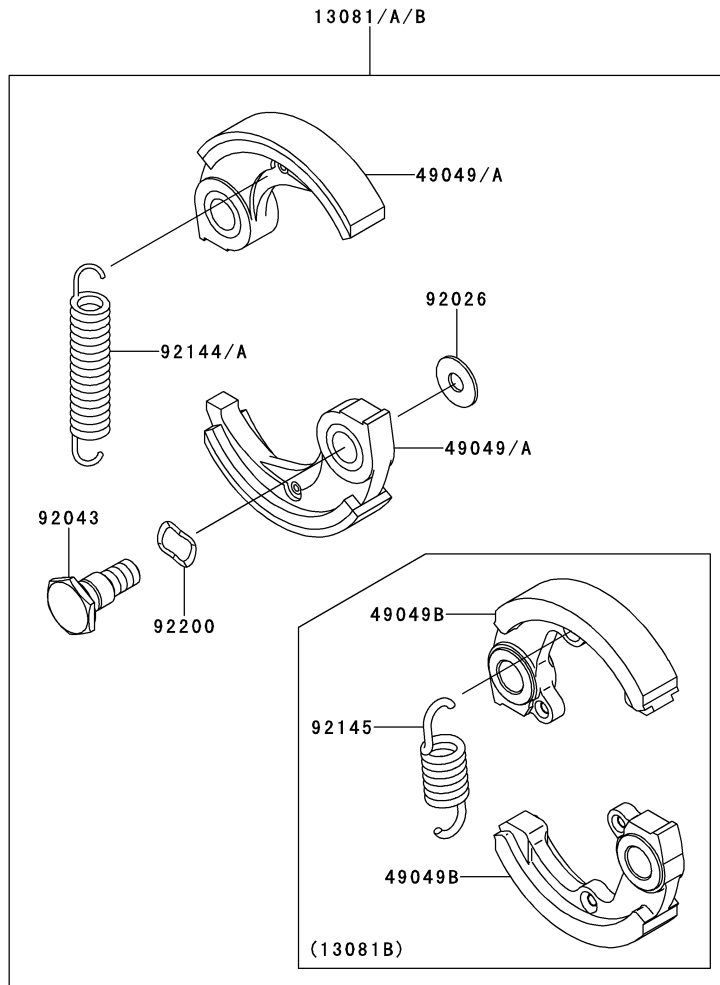
GRID NO.

B-11

This grid covers:

P.T.O-EQUIPMENT

E0220-A050B



Ref. No.	Part No.	Description	Quantity	
			A	B
13081	13081-2220	CLUTCH-ASSY		1
13081A	13081-2220	CLUTCH-ASSY	1	
13081B	13081-2236	CLUTCH-ASSY	*	
49049	49049-2075	SHOE-CLUTCH		2
49049A	49049-2075	SHOE-CLUTCH	2	
49049B	49049-2104	SHOE-CLUTCH	*	
92026	92026-2125	WASHER	2	2
92043	92043-2210	PIN,CLUTCH	2	2
92144	92144-2390	SPRING		1
92144A	92144-2390	SPRING	1	
92145	92145-2178	SPRING	*	
92200	92200-2064	WASHER,SPRING,10.5X14.5X0.3	2	2

This catalog covers:

TJ035E- □ S50

GRID NO.

C-03

This grid covers:

LABEL

F0290-B399A

Ref. No.	Part No.	Description	Quantity	
			A	B
56039	56039-2963	LABEL-PRODUCT	1	1
56070	56070-2020	LABEL-WARNING	1	1
56080	56080-2428	LABEL-BRAND	1	1

56039



56070



56080



This catalog covers:

TJ035E- □ S50

GRID NO.

H-09

This grid covers:

PART NAME INDEX

AIR-FILTER/MUFFLER.....	B-08
CARBURETOR.....	B-07
COOLING-EQUIPMENT.....	B-05
CYLINDER/CRANKCASE.....	B-03
ELECTRIC-EQUIPMENT.....	B-06
FUEL-TANK/FUEL-VALVE.....	B-09
LABEL.....	C-03
P.T.O-EQUIPMENT.....	B-11
PISTON/CRANKSHAFT.....	B-04
STARTER.....	B-10

This catalog covers:

TJ035E- □ S50

GRID NO.

H-10

This grid covers:

NUMERICAL PARTS INDEX

Part No.	Grid No.	Part No.	Grid No.	Part No.	Grid No.	Part No.	Grid No.	Part No.	Grid No.
11005-2160.....	B-03	32099-2419.....	B-10	92145-2178.....	B-11				
11011-2366.....	B-08	32099-2433.....	B-10	92145-2193.....	B-06				
11013-2229.....	B-08	34001-2090.....	B-03	92153-2128.....	B-08				
11049-2006.....	B-07	39156-2089.....	B-05	92153-2134.....	B-06				
11060-2111.....	B-07	39156-2089.....	B-05	92170-2041.....	B-06				
11061-2054.....	B-07	43028-2067.....	B-07	92170-2041.....	B-06				
11061-2192.....	B-03	43028-2096.....	B-07	92171-2067.....	B-06				
11061-2193.....	B-08	43049-2062.....	B-07	92171-2073.....	B-09				
11061-2208.....	B-07	46075-2161.....	B-10	92172-2060.....	B-05				
11061-2209.....	B-07	49019-2114.....	B-09	92172-2061.....	B-10				
11065-2125.....	B-08	49043-2067.....	B-07	92172-2065.....	B-10				
11065-2130.....	B-03	49049-2075.....	B-11	92172-2091.....	B-07				
12021-2055.....	B-07	49049-2075.....	B-11	92191-2102.....	B-09				
12022-2060.....	B-07	49049-2104.....	B-11	92192-2117.....	B-09				
120CB0516.....	B-08	49060-2062.....	B-10	92192-2135.....	B-06				
120CB0520.....	B-03	49069-2435.....	B-08	92192-2165.....	B-06				
13001-2170.....	B-04	49080-2201.....	B-10	92200-2064.....	B-11				
13002-2101.....	B-04	49088-2566.....	B-10	92200-2074.....	B-07				
13008-6045.....	B-04	49088-2588.....	B-10	92210-2094.....	B-06				
13033-2065.....	B-04	49089-2745.....	B-05	99996-6089.....	B-09				
13033-2065.....	B-04	49089-2748.....	B-05						
13033-2067.....	B-04	49119-2243.....	B-04						
13081-2220.....	B-11	51001-2336.....	B-09						
13081-2220.....	B-11	51048-2083.....	B-09						
13081-2236.....	B-11	510A3100.....	B-06						
13165-2103.....	B-10	56039-2963.....	C-03						
13169-2386.....	B-10	56070-2020.....	C-03						
13272-2009.....	B-03	56080-2428.....	C-03						
14043-2051.....	B-07	59066-2800.....	B-05						
14069-2088.....	B-09	59101-2119.....	B-10						
14080-2064.....	B-03	59106-2072.....	B-10						
14080-2065.....	B-03	92009-2249.....	B-07						
14090-2017.....	B-07	92009-2277.....	B-07						
14091-2147.....	B-06	92009-2336.....	B-07						
15004-2049.....	B-07	92009-2337.....	B-07						
16030-2078.....	B-07	92009-2354.....	B-07						
16055-2051.....	B-07	92009-2383.....	B-09						
16073-2220.....	B-06	92009-2411.....	B-08						
16160-2089.....	B-07	92015-2145.....	B-07						
16160-2141.....	B-07	92026-2125.....	B-11						
18020-2091.....	B-08	92026-2355.....	B-04						
18077-2139.....	B-08	92033-2010.....	B-10						
21050-2317.....	B-06	92033-2061.....	B-04						
21083-2073.....	B-07	92033-2078.....	B-07						
21130-2074.....	B-06	92043-1302.....	B-03						
21130-2077.....	B-06	92043-2094.....	B-07						
21130-2078.....	B-06	92043-2210.....	B-11						
21169-2051.....	B-06	92045-2058.....	B-03						
21169-2078.....	B-06	92049-2253.....	B-03						
21171-2257.....	B-06	92049-2267.....	B-03						
21171-2270.....	B-06	92055-2147.....	B-07						
214AA0408.....	B-03	92063-2393.....	B-07						
221AA0408.....	B-03	92070-2107.....	B-06						
225AA0530.....	B-03	92071-2142.....	B-09						
233AA0516.....	B-05	92144-2054.....	B-10						
234AA0560.....	B-07	92144-2157.....	B-10						
242AA0512.....	B-08	92144-2308.....	B-07						
26011-2113.....	B-06	92144-2390.....	B-11						
26011-2361.....	B-06	92144-2390.....	B-11						
32085-2106.....	B-07	92145-2149.....	B-10						